

**SOUTH TIMNATH**  
METRO DISTRICT

## **Posting Locations for Metro District Notices**

### **24 and 72 Hour Posting Locations:**

#### **District 1:**

**Tract R: All three corners of open space area south of Wilkins Court and north of Redbridge Drive. (300 yards south of Clubhouse site, marked with three 4" by 6" post)**

#### **District 2:**

**Southwest corner of River Pass Road and Summerfield Parkway**

**Southwest corner of River Pass Road and Saddle Horn Drive**

**Southeast corner of Sienna Drive and Three Bell Parkway**

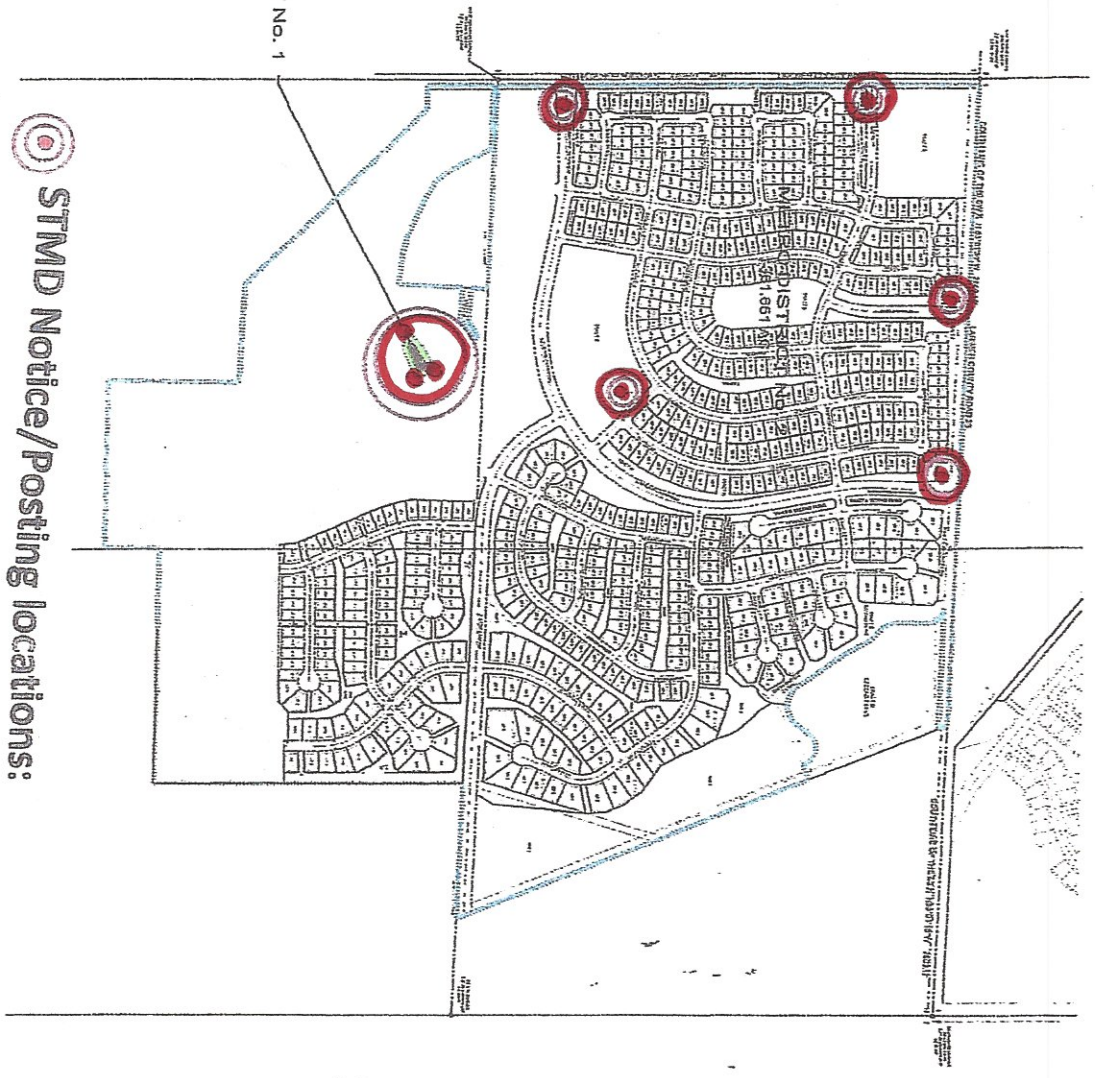
**Southeast corner of Three Bell Parkway and Summerfield Parkway**

**6000 Summerfields Parkway \* Timnath \* CO \* 80547 (Community Center & Pool)**

All on site posting locations have a 4" by 6" post set in concrete for notices to be attached to. 6000 Summerfields Parkway is posted inside locked bulletin board at front door way.

# SOUTH TIMNATH DISTRICT MAP

SECTION 12, TOWNSHIP 6 NORTH, RANGE 68 WEST  
TOWN OF TIMNATH, COUNTY OF LARIMER, STATE OF COLORADO



METRO DISTRICT No. 1  
(TRACT P)  
0.834 AC.



STMD Notice/Posting locations:

### LEGEND:

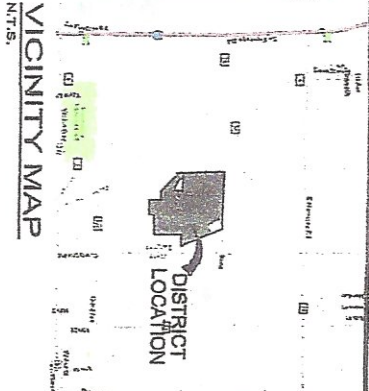
- District "Number"
- Section Corner
- Metro District Parcel No. 1
- Metro District Parcel No. 2

### DISTRICT ACREAGE:

SOUTH TIMNATH METRO DISTRICT LAND DISTRIBUTION TABLE			
PARCEL	SF	AC	% OF TOTAL
METRO DIST 1	14,633	0.34	0.43
METRO DIST 2	16,133,497	36,841	92.1
<b>SUM =</b>	<b>16,148,130</b>	<b>37,185</b>	<b>100.0</b>

JUNE 16, 2016

### VICINITY MAP



**SOUTH  
TIMNATH**  
Metropolitan Districts  
**DISTRICT MAP**